

The Information System in Spiritual Management

Felician ALECU & Teodora ALECU,
Academy of Economic Studies, Bucharest, ROMANIA

Key words: *data, data processing, knowledge, information system, spiritual management*

Abstract: A *system* represents a set of dependent elements forming a single unitary entity. A particular type of system is the *economic* one which may define economic components and mechanisms such as a company, an industry, a field of the national economy and so on. Any system receives *input* from the outside world, which is processed and results in *out*. The accurate transformation of the *input* into *output* is made by a *feedback loop*. The quality of the output of any system is dependent on the functional characteristics and efficiency of the *decision system, operating system* and *information system*.

The *decision system* is composed by specialists that are using specific methods and techniques to plan, forecast, decide, organize, coordinate and control the operating system functioning in order to successfully achieve its goals, meaning the management. The entire activity carried on in a system depends on the quality of the management. The information system manages all the information existing at the level of the system in question by using specific methods and techniques. Therefore, the management is directly and fully dependent on the characteristics of the information system available and on the way in which information can be accessed, processed and used in specific activities.

In the last years the power of the information over the quality of the management was more and more visible. The future will be the scene of a new trend in managing information and the other inputs of any system. The spiritual management is the new way to behave in a society of scarce resources and ideas. The spiritual approach in management brings a new way to access, process and use information for the benefit of high quality outputs. Automatic processing of data is combined with a spiritual way of data processing, which includes items such as intuition, knowledge of the personal and subjective behaviors of the operators, identification of opportunities. Spiritual management is the new age of management, where information has a central role and the best solutions are identified after taking into consideration subjective and personal characteristics of the operators, events and effects.

The role of the information system

A *system* represents a set of dependent elements forming a single unitary entity. A particular type of system is the *economic* one which defines economic components and mechanisms such as a company, an industry, a field of the national economy and so on. Even the national and worldwide economies can be seen at a global mondoeconomic level as being complex economic systems.

An economic system receives an *input* of production factors. This input is processed and an *output* is provided in the shape of products and services provided to the market. The accurate transformation of the *input* into *output* is made by a *feedback loop* (figure 1).

The transformation process takes place into a dynamic way that makes the system to progress according with to a specific route. The state of the system describes the system degree of evolution.

A system can be defined by the following elements:

- inputs;
- outputs;
- transformation process;
- system structure and its state.



Figure 1 Economic System

A complex economic system is made by the following components (figure 2): *decision system*; *operating system*; *information system*.

The *decision system* is composed by specialists that are using specific methods and techniques to plan, forecast, decide, organize, coordinate and control the operating system functioning in order to successfully achieve its goals.

The *operating system* represents the technical and functional mechanisms together with the human, material and financial resources used to achieve the objectives determined by the decisions transmitted from the decision system level.

The *information system* resides in all the informational flows and circuits and all the methods, techniques used to process the data needed by the decision system. The information system is the middle layer between the decision and information systems and the communication between these layers is made in all possible directions. Thus, the information system is processing and transmitting data from the decision to the operating system. Also, it records, processes and transmits the information from the operating system to the decision one.

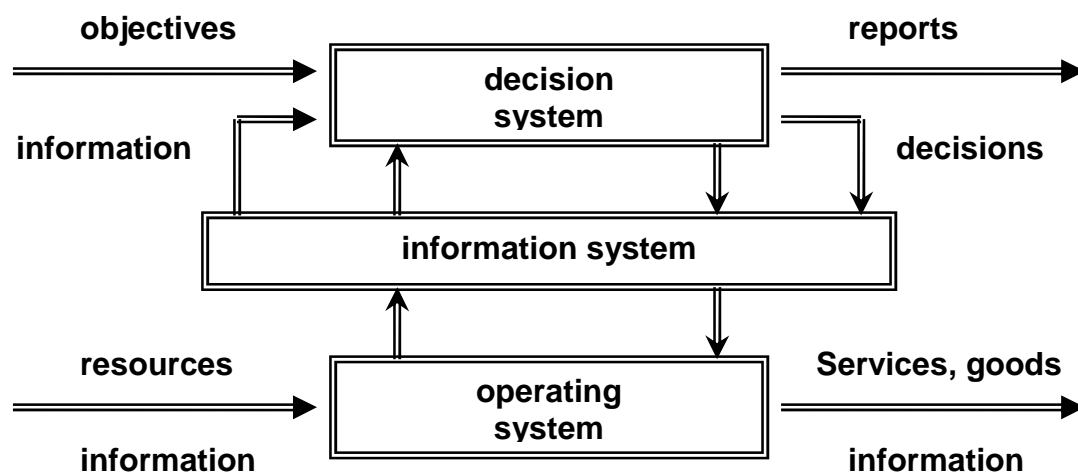


Figure 2 The components of an economic system

We can conclude that the information system manages all the information existing at economic system level by using specific methods and techniques.

The *information technology system* is a component of the information system that is in charge with collecting, processing, transmitting, storing and presenting the data by using computing systems. In other words, it is responsible for automatic processing of the data by using various methods and techniques.

The automatic data processing covers the collecting, transmitting, processing and storing operations:

- *collecting data* – takes place at the location where the primary data are generated. All the collected elements are stored in a proper manner to be used to automatic processing;
- *processing data* – the primary data are transformed into final results by following a predefined sequence of operations adapted to the user requirements, hardware specifications and processing technique.
- *transmitting data* – from the primary locations to the automatic processing systems. Also, it is responsible for delivering the final results to the consumers;
- *storing data* – is responsible for data archiving on specific medium in order to be possible to access and process the content in the future.

Spiritual management

Current world can be described as a gigantic information system, composed of a multitude of sub-information systems, where each sub-information system defines a specific aspect of individual and social life and economic reality. Achieving the objectives in our times significantly depends on the ability to understand the particularities of the information systems that surround us and to make optimum decisions at the proper moment on the basis of known information contained in these information systems. Economic success crucially depends on the way in which information from all sectors of life are used to produce results.

Understanding the information and data from the surrounding environments, how knowledge is selected and assimilated from the external environment and the ability to make predictions based on them is a key for making optimal decisions. Forecasting is no longer a tool that can be obtained through the use of logical-mathematical methods. Managerial predictions are more and more made on the basis of intrinsic capabilities, which bring with what is called intuition. Intuition cannot be taught, but it can be developed through continuous processing of the inner universe of the individual who has the manager function. A manager of the future is able to receive information from surrounding environments, to understand and assimilate them in a sufficient manner so that to enable decision-making, changing economic-social behaviors, attitudes, attributes such as intensifying concern over the state of physical and emotional of all those persons involved in decision-making diagram.

The implications of the attitudes and actions of a manager over the colleagues with whom he works are multiple. A leader must have the ability to put into action driving forces of the people working and living around so that to bring on the one hand material enjoyment, profits, but on the other hand to maintain a high level of satisfaction of all persons involved in processes: work colleagues, customers, suppliers, authorities, public community.

The human being is located at congruence of infinite information systems. Knowing and understanding all of them is impossible. Intuitively understanding the data coming from the surrounding environments and acting on the basis of predictions, this is the key for spiritual manager of the future.

Being a good manager no longer means just systematizing the decision-making process, knowing its stages and improving the processes already in operation. A successful lead means to intuitively know the satisfaction needs of all economic, social operators, of those involved in work and also to act so that to create an optimal system of general information. Information circulates in several directions: from active players to observers, from observers to the system, from the system and to the system. To act economically efficient managers should catch the message of more information systems, and use knowledge gained intuitively or in a logical-mathematical way in order to generate effect blends for as many categories of operators in the sub-information systems as possible.

Creativity of a manager is the unique and personal ability to get relevant information from the infinite surrounding subsystems and to use them in the optimum way for the categories of persons involved in the decision-making process and for the persons affected by the managerial actions. People involved in the decision-making process would be those involved in the initial stages of decision-making process, such as the establishment of objectives, strategy, vision, mission beyond recipes strict social and economic. People affected by the decision-making process are those involved in implementing the actions decided in phase assessment results, but foreign operators such as customers, banks, media, community as a whole.

The mission of a manager of the future is to transcend the existing economic theories and find that one personal way to get appropriate information, data and create knowledge which has the characteristic that are beneficial for all persons affected by the process decision-making.

Succeeding to combine information, data and existing knowledge in an optimal manner which is beneficial both economically and monetary, but also in terms of social, personal, community preferences, is an ability under development, but in future we will see what more and more managers focusing to develop this type of managerial behavior.

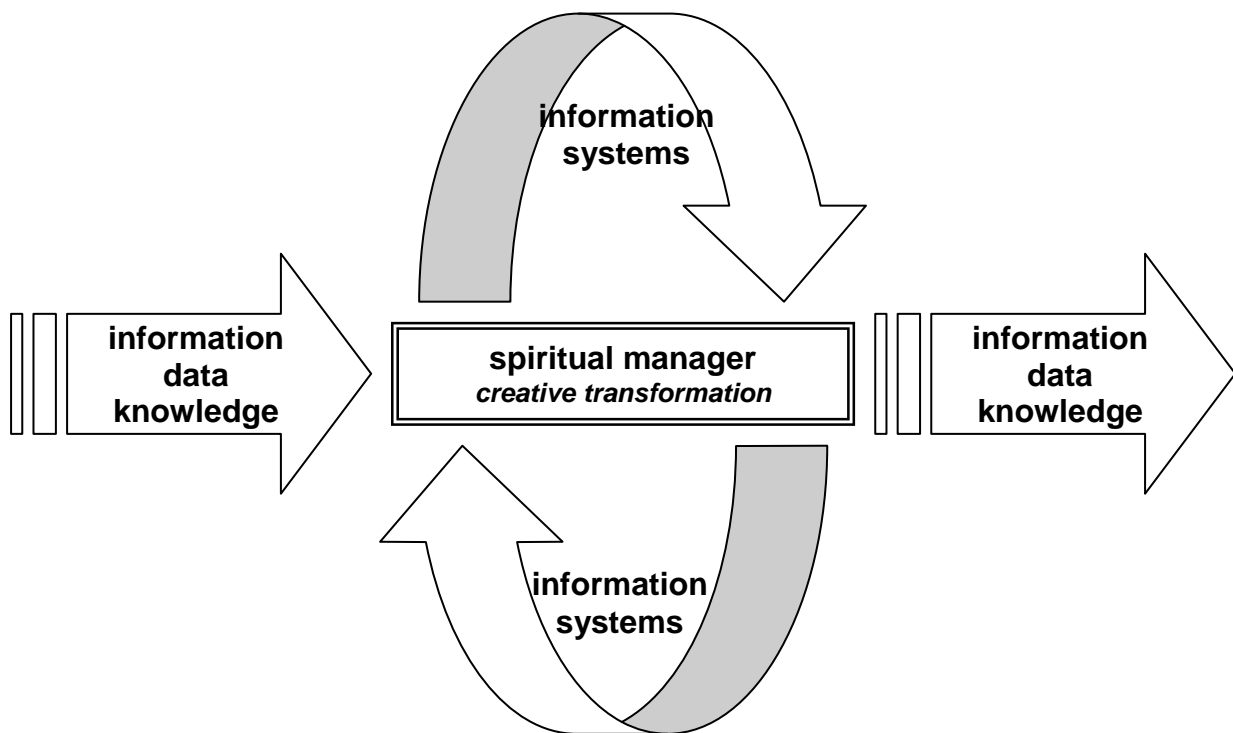


Figure 3 Creative transformation of information

"Some called synchronic-destiny that way of life when you feel that you are yourself as you came from the purity of divine creation, where there are no shades and suffering, where there is unsuccessful, because everything happens as they should, in a natural way. Others called the golden path, which is when you open your doors to receive angelic help and when everything goes well, exactly as it should be, because receiving guidance from angels you follow a best path of life and decisions. The path followed is that your soul knows better. "This is an excerpt from a spiritual research aimed to finding ways of awareness and action in all areas of life by which man shall ensure an optimal state of health, good provision, power employment, the inspiration to take the best decisions. The article has been published in the Inner Universe magazine. How true are these words manager of the future!

It can not be other that a spiritual manager. Theories learned by now on how to manage are good but not sufficient to ease performance. In order for the work to go smoothly, fluently, without frustrations and without many obstacles, still need something besides what is taught in school, in college, the economic environment. That means just the unnamed and personal ability of a manager to obtain optimum information from the environment, process and transform the information into behavior and decisions communicated to others, where the decisions have benefic consequences for a wider range of people around. The transformation of information, data and knowledge in the spiritual and economic way is through the ability to be creative.

The creative transformation of information and signals received from surrounding information systems are based on intuition and creativity.

References

Alecu, F (coauthor). 2005. *Economy Informatics*. Bucharest: Tribuna Economică.

Alecu, T. 2006. *Divine Synchronization*. Bucharest: Inner Universe Magazine, Saphira Publishing House.